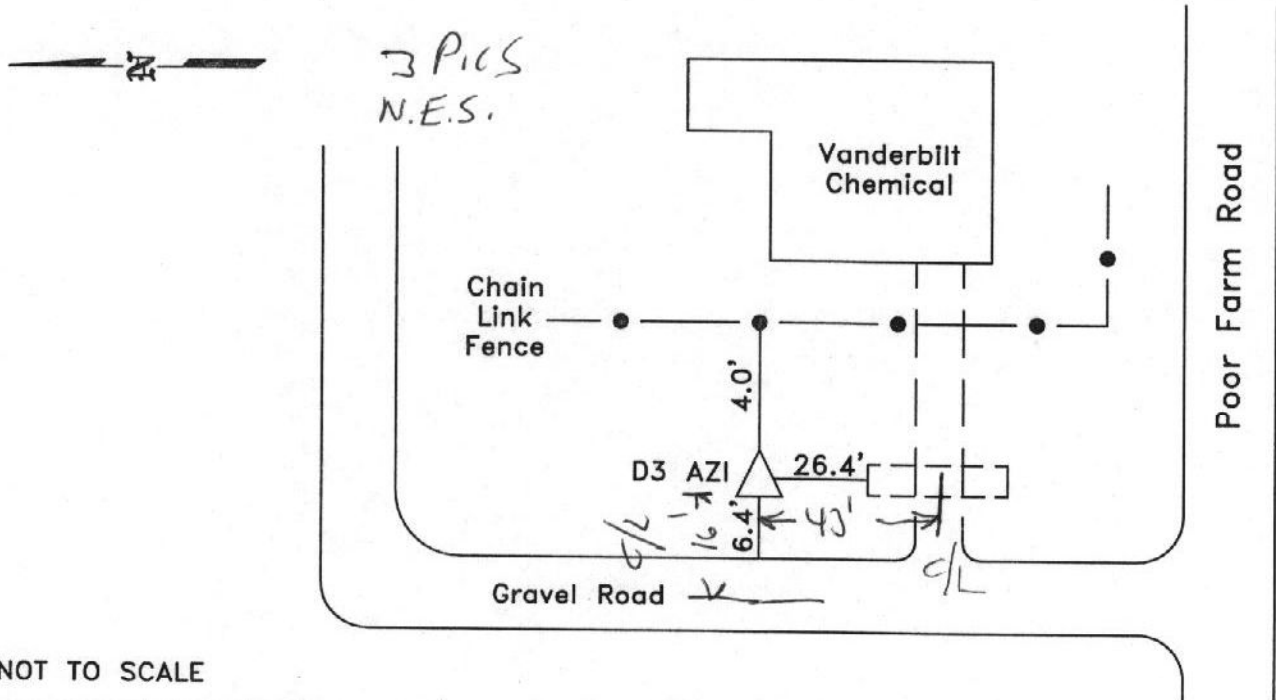


CITY OF MURRAY CONTROL MONUMENT CARD

DESIGNATION: D3 AZI
TYPE: CONCRETE MONUMENT W/ CITY DISK
DATE SET: JUNE 2002 QUAD: DEXTER, KY.
HORIZONTAL DATUM: NAD-83 VERTICAL DATUM: NAVD-88
STATE: KENTUCKY COUNTY: CALLOWAY ZONE: KY. S 1602

NORTHING: 1764740.83 FT
EASTING: 891677.74 FT
ELEVATION: 468.07 FT (GPS)
LATITUDE: N 36°38'49.27106" LONGITUDE: W 088°18'08.67004"
SCALE: CONVERGENCE:
PLANE AZI. TO AZI. MARK:

To Reach: From the intersection of Poor Farm Road
and State Route 641, go east on Poor Farm Road 0.3
mile to the station on the left.



NOT TO SCALE



GRW Aerial Surveys, Inc.
801 Corporate Dr. Lexington Ky. 40503
(859)223-3999